

HANSE 388

REF: AY2418

PRICE: £229,000 TAX PAID

YEAR: 2021

LYING: SOUTHAMPTON, UNITED KINGDOM



OPEN TO PART EXCHANGE • ARGO YACHTING TECHNICAL ORIENTATION INCLUDED

PROFESSIONAL PHOTOGRAPHY AVAILABLE

UK Tax Paid • Yanmar 3YM30AE Diesel E17540 engine • White with dark grey line hull • Oak interior cabinetry upgrade • 3 cabins accommodating 6 guests • Selden rig equipment • Elystrom FCL Laminate Triradial mainsail and self tacking jib • B&G Zeus 12 chart plotter • B&G Triton multifunction displays • B&G Autopilot with Precision 9 compass • B&G signal splitter • Jefa GRP rudder with self aligning needle bearings • Class B AIS transponder • Lewmar manual and electric winches • Fusion audio equipment • Deck floodlight upgrade • Hot and cold shower

PLEASE CONTACT US FOR MORE INFORMATION ON THIS 2021 HANSE 388 SAIL BOAT FOR SALE

HANSE 388

REF: AY2418

SPECIFICATION

DIMENSIONS

Length: 37ft 5" / 11.40m

Beam: 12ft 10" / 3.90m

PROPULSION

Number of Engines: 1

Fuel type: Diesel

Engine hours:

Total power:

HULL

- White isophthalic gelcoat hull
- Solid laminate with vinyl ester first layer for osmosis prevention and additional strength
- Dark grey hull stripes
- Balsa core for weight reduction and insulation plus vinyl ester layer for additional strength
- Cast iron fin keel (2.06m)
- 6 hull windows (3 each side)

DECK EQUIPMENT

- Flexiteek decking to cockpit and side decks
- 12v electric anchor windlass with wired remote control
- Lewmar Delta anchor with 30m chain
- 2 x Lewmar manual winches
- 2 x Lewmar electric winches
- 2 x Spinlock jammer banks
- Cockpit table - stainless steel with folding teak leaves
- Cockpit locker on starboard side
- Twin lazarette lockers at helm positions
- Folding helm seats
- White composite steering wheels
- Folding bathing platform
- Gas bottle locker
- Deck floodlight upgrade

HANSE 388

REF: AY2418

- Hot and cold cockpit shower
- Side gates to guard wires for easy side access
- Upgraded anchor bow fitting with 2 rollers and gennaker attachment point
- Bathing ladder integrated into bathing platform
- Outboard bracket
- 2 additional opening hatches either side of companionway
- Winch handles
- Fenders
- Warps
- Sprayhood
- Stack pack for mainsail
- Cockpit cushions
- Wheel covers

SAFETY

- Jackstay lifelines
- Radar reflector on mast
- Danbuoy
- Horseshoe with light

NAVIGATION EQUIPMENT

- B&G Zeus 12 Chart Plotter at cockpit table
- 2 x B&G Triton multifunction displays in cockpit (Speed, Depth, Wind & Temp)
- B&G V60 VHF with H60 handheld
- Additional handheld VHF cradle for cockpit
- B&G Autopilot with Precision 9 compass
- B&G Autopilot remote control
- Antenna at masthead for VHF, FM/AM & AIS
- B&G Signal splitter
- Class B AIS Transponder
- Jefa GRP rudder with self aligning needle bearings

SHIPS SYSTEMS

- Bow thruster
- 12v switch panel at chart table
- 230v panel at chart table

HANSE 388

REF: AY2418

- 1 x 90ah engine start battery
- 2 x 160ah domestic battery bank
- Battery charger
- Shore power system with galvanic isolator
- Water tank – 295 litres
- Fuel tank – 160 litres
- Hot & Cold water throughout
- Hot water tank (heated from both engine and immersion)

RIG

- Selden 2 spreader mast
- Selden boom with single line reefing system
- Selden Furler headsail furler
- Rope backstay adjuster
- Selden Rodkicker vang

SAILS

- Elvstrom FCL Laminate Triradial mainsail
- 3rd reef modification to mainsail
- Elvstrom FCL Laminate Triradial self tacking jib

INTERIOR FITOUT AND EQUIPMENT

- Oak interior cabinetry upgrade with the classic stripes flooring
- 3 double cabins accommodating 6 guests
- Heating throughout all cabins and LED lighting

SALOON

- Saloon table on starboard side with U shaped seating
- Upgrade saloon table and seating area converts into additional double berth when needed
- Extensive high level storage cupboards on both sides
- Under seat storage
- Additional sofa on port side
- LED reading lights with USB charging in base

GALLEY

HANSE 388

REF: AY2418

- L shaped galley on starboard side
- White colour solid resin galley surface
- Extensive cupboard and drawer storage areas
- Large 130 litre fridge with both front and top opening
- Gas cooker with 2 burner hob

FORWARD CABIN

- Large Double bed
- Wardrobe storage on both sides
- LED reading lights with USB charging in bases

AFT CABINS

- Twin double cabins
- Wardrobe storage spaces
- LED reading lights with USB charging bases

HEADS

- Heads with shower on port side
- Wash basin with vanity unit and storage

AUDIO VISUAL EQUIPMENT

- Fusion stereo
- 2 x internal speakers
- 2 x external speakers

BROKERS COMMENT

- Engine service carried out May 2025
- Haul out for new anodes and antifoul carried out May 2025
- Rigging and sails inspection carried out March 2025
- 2023, a new freshwater flush toilet fitted to replace the seawater flush one the boat came with
- 2.9m inflatable dinghy with electric outboard available by separate negotiation
- Twin fixed blade propellor
- Sellers to retain the name of the boat
- Flag and staff included in sale

DISCLAIMER

HANSE 388

REF: AY2418

The Company offers the details of this vessel in good faith but cannot guarantee or warrant the accuracy of this information nor warrant the condition of the vessel. A buyer should instruct his agents, or his surveyors, to investigate such details as the buyer desires validated. This vessel is offered subject to prior sale, price change, or withdrawal without notice.

HANSE 388

REF: AY2418

PHOTOS



2021 Hanse 388 sailboat docked at marina, featuring sleek design and modern amenities.



Alt text: "Hanse 388 2021 yacht benefits: technical orientation, unique guarantee, service packs, end-to-end service."



Modern interior of 2021 Hanse 388 yacht with cozy seating and sleek design.



Cozy cabin interior of 2021 Hanse 388 yacht with soft lighting and striped pillows.

HANSE 388

REF: AY2418



Interior cabin of 2021 Hanse 388 yacht with twin beds and modern design.



2021 Hanse 388 sailboat docked at marina, featuring sleek design and modern amenities.

PHOTOS



2021 Hanse 388 yacht docked at marina, featuring sleek design and modern rigging.



2021 Hanse 388 yacht deck with sleek wood finish and water view.

HANSE 388

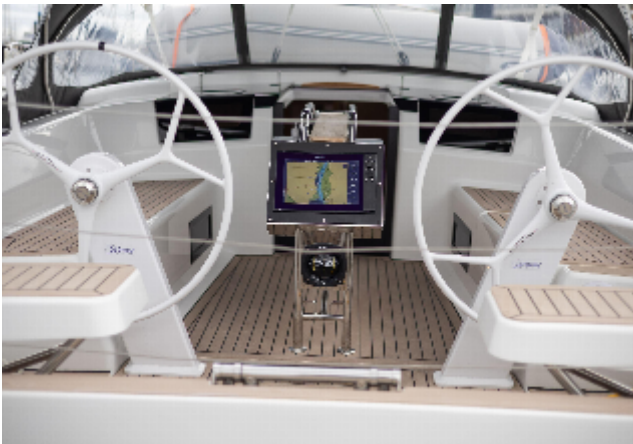
REF: AY2418



2021 Hanse 388 sailboat docked, featuring a sleek deck and inflatable dinghy.



2021 Hanse 388 sailboat docked in marina, named "Blue Canary Too," Southampton.



Cockpit of 2021 Hanse 388 sailboat with dual steering wheels and navigation system.



2021 Hanse 388 yacht cockpit with teak flooring and dual steering wheels.

PHOTOS

HANSE 388

REF: AY2418



Cockpit of 2021 Hanse 388 yacht with navigation system and wooden deck.



2021 Hanse 388 yacht cockpit with open cabin entrance and sleek design.



Interior of 2021 Hanse 388 yacht with modern seating and wooden flooring.



Interior of 2021 Hanse 388 yacht with wooden table and cushioned seating.



HANSE 388

REF: AY2418

Interior of 2021 Hanse 388 yacht with cozy seating and modern design.



Modern interior of 2021 Hanse 388 yacht with cozy gray seating area.



Interior of 2021 Hanse 388 yacht with modern wood cabinetry and seating.



Modern interior of 2021 Hanse 388 yacht with cozy seating and sleek design.



HANSE 388

REF: AY2418

Modern interior of 2021 Hanse 388 yacht with sleek kitchen and wooden flooring.



Modern kitchen sink in 2021 Hanse 388 yacht, featuring sleek chrome faucet and minimalist design.



Modern kitchen stove in 2021 Hanse 388 yacht interior, featuring dual burners and sleek design.



Cozy cabin interior of 2021 Hanse 388 yacht with comfortable bedding and soft lighting.

PHOTOS

HANSE 388

REF: AY2418



Interior cabin of 2021 Hanse 388 yacht with twin beds and modern design.



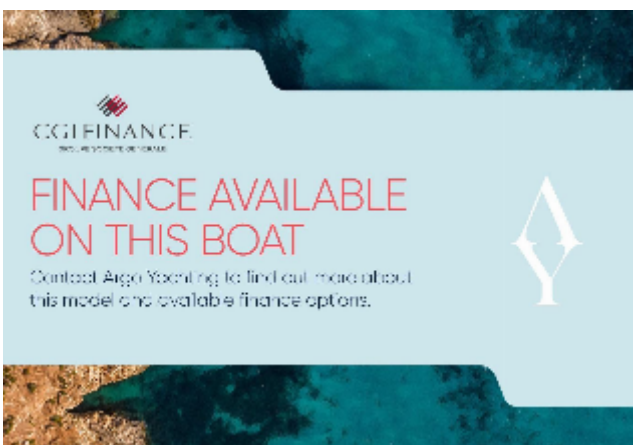
Modern bathroom in 2021 Hanse 388 yacht with sink, mirror, and toilet.



2021 Hanse 388 yacht bathroom with shower, toilet, and modern fixtures.



Engine compartment of 2021 Hanse 388 yacht with visible fire extinguisher and components.



HANSE 388

REF: AY2418

Finance options for 2021 Hanse 388 boat available through CGI Finance and Argo Yachting.