

GALEON 360 FLY

REF: GN360FLY-052

PRICE: £649,950 TAX PAID

YEAR: 2025

LYING: BOWNESS-ON-WINDERMERE, UNITED KINGDOM



IN STOCK

.

OPEN TO PART EXCHANGE • GALEON YACHTS TECHNICAL ORIENTATION INCLUDED

NEW BOAT WARRANTIES APPLICABLE • 5 YEAR ARGO ASSURED WARRANTY

UK tax paid • Twin Volvo Penta 2 x D4-270 dpi • 3 cabins accommodating 6 guests • Extended bathing platform • Permateek on bathing platform, cockpit deck, flybridge steps and flybridge • Foredeck sofa with foldable backrest • Cockpit and flybridge covers • Raymarine i50 with repeater • Bowthruster with joystick • Trim tabs with indicators • Electric cooker and fridge in galley • 2 x 24" TV's • Fusion stereo system • Brochure Images showing

GALEON 360 FLY

REF: GN360FLY-052

PLEASE CONTACT ARGO YACHTING FOR FULL OPTIONS AND PRICING ON A NEW GALEON 360 FLY SPORTS CRUISER FOR SALE

ARGO YACHTING ARE THE DISTRIBUTOR FOR GALEON YACHTS FOR THE UK, THE BALEARICS, PORTUGAL AND THE GERMAN BALTIC COAST

GALEON 360 FLY

REF: GN360FLY-052

SPECIFICATION

DIMENSIONS

Length: 38ft 7" / 11.75m

Beam: 11ft 5" / 3.48m

PROPULSION

Number of Engines: 2

Fuel type: Diesel

Engine hours:

Total power:

HULL COLOUR

- White hull

DECK EQUIPMENT

- Extended bathing platform 900mm
- Foredeck sofa with foldable backrest
- Multifunctional aft sofa in cockpit
- Permateek on bathing platform, cockpit deck, flybridge steps and flybridge
- Shower on bathing platform
- Anchor winch
- Galvanized anchor and chain
- Searchlight on foredeck
- Sunbeds on foredeck
- Fiberglass cockpit table
- LED lights (cockpit, steps, bathing platform, flybridge)
- Front windows washing system
- Cockpit cover
- Flybridge cover
- Cover for flybridge steering console
- Antifouling (black)
- Freshwater anodes

NAVIGATION EQUIPMENT

Tel: +44 (0)1489 885656

Email: uk@argoyachting.com

www.argoyachting.com

GALEON 360 FLY

REF: GN360FLY-052

- Raymarine i50 instrument with repeater
- Battery charger
- Rudder indicator

SHIPS SYSTEMS

- Volvo engine accessories
- Full control package (trip computer, cruise control, single Lever function, power trim assistant)
- Hydraulic steering
- Bow thruster with joystick
- Heating
- Water heater (40l)
- Trim tabs with indicators
- Complete waste system with electric pumps

INTERIOR FITOUT

- Modified Lati Grey interior wood, matt finish
- 3 cabins and 1 bathroom
- Entrance aluminium doors to saloon
- Aluminium skipper side doors
- Large hull window in master cabin
- Entrance door curtain
- Curtains in saloon and cabins, shutters in bow cabin
- Artificial wood floor in saloon
- Decorative bed covers and pillows

INTERIOR EQUIPMENT

- Electric induction cooker with two hobs (230v)
- Refrigerator in galley (85l)

AUDIO VISUAL EQUIPMENT

- Fusion radio in saloon (USB) with 2 x speakers and remote on fly (with 2 x speakers)
- Electric sliding 24" LED TV in saloon
- 24" LED TV in forward cabin

DISCLAIMER

GALEON 360 FLY

REF: GN360FLY-052

The Company offers the details of this vessel in good faith but cannot guarantee or warrant the accuracy of this information nor warrant the condition of the vessel. A buyer should instruct his agents, or his surveyors, to investigate such details as the buyer desires validated. This vessel is offered subject to prior sale, price change, or withdrawal without notice.

GALEON 360 FLY

REF: GN360FLY-052

PHOTOS



PHOTOS

GALEON 360 FLY

REF: GN360FLY-052



PHOTOS

GALEON 360 FLY

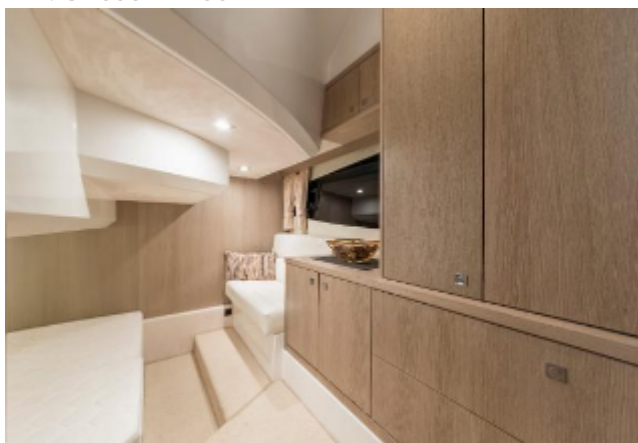
REF: GN360FLY-052



PHOTOS

GALEON 360 FLY

REF: GN360FLY-052



PHOTOS

GALEON 360 FLY

REF: GN360FLY-052

